



Apt 106 All Six House, Liverpool, L2 7AD
£1,495 Per Calendar Month

www.
cityresidential
.co.uk



About the Property

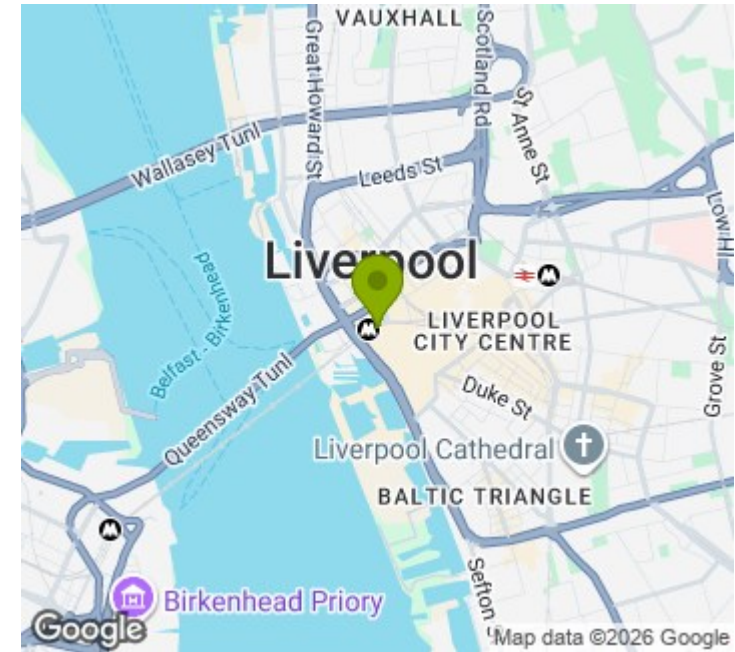
Do not miss this fantastic opportunity to secure an apartment in the newly developed All Six House. Ready to move into immediately!

Located on Derby Square, the development is excellently positioned for the extensive mix of bars, restaurants, shops and entertainment options located on both Castle Street and in the Liverpool One shopping centre. The development also benefits from excellent transport links with James Street Station being literally on your door step.

The apartments benefits from ultra modern specification which is finished to a high standard and offers the very best of City Centre Living.

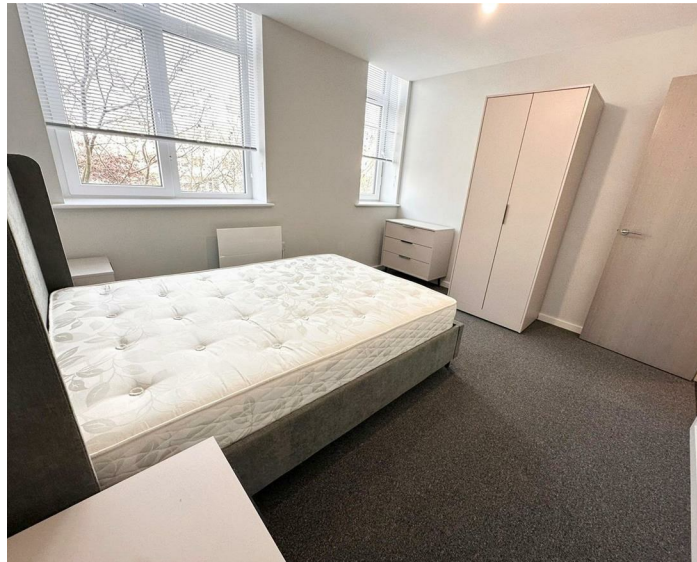
Contact us today on 0151 231 6100 to arrange a viewing!

- Immediate Move In
- Furnished Two Bedroom Apartment
- Be Quick, We Anticipate High Demand!
- EPC - D
- Council Tax Band - C
- Deposit Amount - £1725
- Head lease restriction: no pets



Energy Efficiency Rating

	Current	Potential
Very energy efficient - lower running costs		
(92 plus) A		
(81-91) B		
(69-80) C		
(55-68) D		
(39-54) E		
(21-38) F		
(1-20) G		
Not energy efficient - higher running costs		
England & Wales	EU Directive 2002/91/EC	



City Residential
81/87 Victoria Street, The Old Haymarket, Liverpool L1 6DG
T: 0151 231 6100 F: 0151 231 6105
E: sales@cityresidential.co.uk



WWW.
cityresidential
.co.uk